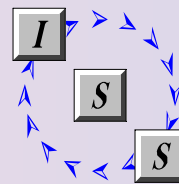


Winteracter

The Fortran 9x GUI Toolset



Winteracter is a Fortran 9x user interface and graphics toolset supporting Microsoft Windows and X Windows. It combines a comprehensive subroutine library with an extensive set of visual tools which simplify the design and development process. Winteracter based applications can be totally Fortran 9x based, eliminating the need to resort to compiler specific features, mixed language programming or low level API calls. We aim to enable scientists and engineers to implement a modern graphical user interface, within a familiar Fortran-specific context.

User Interface (general)

- Multiple windows
- Text editor windows (plus RTF support under Win32)
- Menu bars, toolbars and floating menus
- Copy windows/dialogs to/from bitmaps
- Bitmap viewer windows
- Greatly simplified event handling

Dialogs

- String & numeric fields
- List boxes & combo boxes
- Check boxes & radio buttons
- Spreadsheet-like grid controls, in dialogs or dedicated grid-windows
- Tab controls ('property sheets')
- Trackbars
- Treeviews
- Spinners on numeric fields
- Progress bars
- Group boxes
- Picture fields

Common Dialogs

- Printer setup
- Message box
- File and directory selectors
- Colour selector

Operating System

- Command line arguments
- Directory handling
- Binary ('stream') file I/O
- Get/set environment variables
- Access to registry and clipboard
- Sub-program/command invocation
- File copy/rename/delete
- File info (size/time/date)

General

- Sound/movie playback
- Send email with attachments
- Display HLP/HTML/CHM/PDF files
- Database interrogation via ODBC
- Sorting
- Zlib compression

Graphics Import

- Windows Metafiles (16 & 32 bit)
- HP-GL + HP-GL/2 files generated by Winteracter
- CGM
- PNG, PCX, BMP

Graphics Interfaces

- Extensive graphics library included
- OpenGL interface (f90gl derivative, plus text handling extension routines)
- CalComp emulation (PLOT, PLOTS, etc.)
- Lahey Video Graphics Library emulation

Graphics Primitives

- Lines : Broken lines, line width, polylines
- Curves : Bezier, B-Spline, coincident
- Colour : 8-bit paletted or 24-bit true colour
- Polygons : Outlined, hatched, solid, graduated or shaded
- Text : Stroke & outline rescalable software fonts and format specific fonts (e.g. TrueType or PostScript)
- Co-ordinate system: User definable
- Target drawable : Window, memory bitmap, dialog field, printer, metafile
- Points : Set / get pixels
- Markers
- Proximity checks
- Raster ops (and/or/xor)

3D Modelling

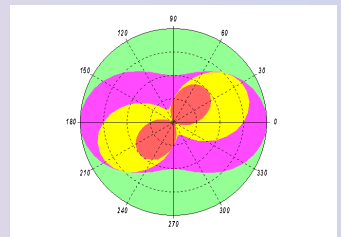
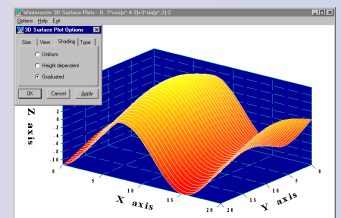
- Create 3D models
- View wireframe, unshaded or lit/shaded
- 3D text, using outline fonts

Graphics Hardecopy/Export

- Windows Print Manager
- Windows metafiles (16 and 32 bit)
- PostScript and EPS
- HP-GL and HP-GL/2
- CGM
- SVG (Scalable Vector Graphics)
- Epson ESC/P and ESC/P2
- HP PCL (colour and mono)
- AutoCAD DXF
- PNG, PCX and BMP

Presentation Graphics

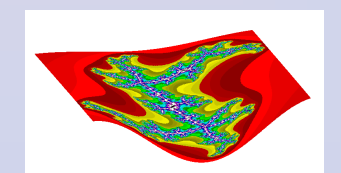
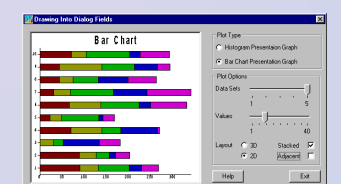
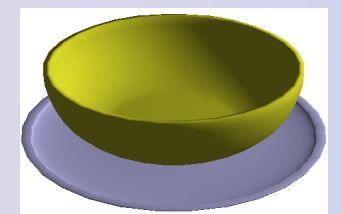
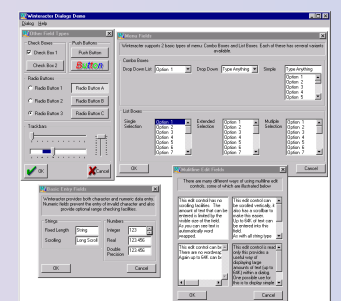
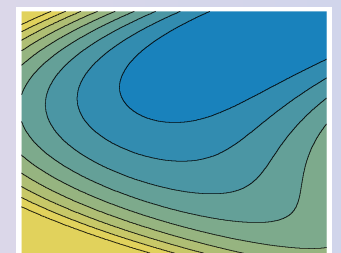
- Histograms and bar charts
- Time oriented line plots, optional error bars
- High/low plots
- Polar plots
- Scatter plots (2D and 3D)
- Pie charts
- XY pair and XYZ triplet line plots
- 2D line-only or filled contour plots
- 3D surfaces (carpet or stepped)
- 3D volume plots
- Vector plots



Combined Window and Dialog

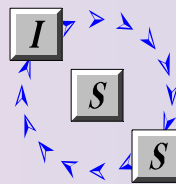
	Y	Z
0.00	300.00	
1.00	301.00	
2.00	302.00	
103.00	203.00	303.00
104.00	204.00	304.00
105.00	205.00	305.00
106.00	206.00	306.00
107.00	207.00	307.00
108.00	208.00	308.00

Save data file



Winteracter

The Fortran 9x GUI Toolset



Visual Tools

Winteracter includes a substantial selection of visual tools which simplify the creation of dialogs, menus, icons, cursors, buttons, toolbars, help files and graphs.

- **Resource Editor** : The core Winteracter user interface design tool. Used to create, edit and maintain menus, dialogs, toolbars, icons, cursors and bitmap buttons. Includes WYSIWYG dialog test option. Creates menus which can be used in both the conventional menu bar+pop-up arrangement or as vertical floating menus. Selection of standard buttons, icons and cursors supplied or design your own with the built in image editor.
- **WiDE** : The Winteracter Development Environment provides an easier to use alternative to compiler specific IDE's. Works with all supported compilers. Includes fully integrated versions of the Resource Editor and WED. (Note : Use of WiDE is recommended, but optional. Other environments can be used, including the command prompt.)
- **Application Wizard** : Provides a quick start to building a new Winteracter based application.
- **GraphEd** : Graph designer. Supports all of the features of our Presentation Graphics routines. Generates source code to produce the required plot type.
- **HelpEd** : Create HLP, CHM or HTML help files from common source.
- **TrEdit** : Troubleshooter editor. Creates Q&A style problem-solvers, in HTML or CHM.
- **SetupEd** : Create installation scripts for use with the bundled generic installer, which is freely distributable with Winteracter-based applications. (Windows only)
- **PlotConv** : View, print and convert graphics files in various formats. Freely distributable with Winteracter-based applications.
- **WED** : Text editor with many Winteracter/Fortran specific features.
- **WinterView** : Two-dimensional array data viewer. View data in a grid and a 2D/3D plot.
- **3Dview** : OpenGL-based 3D model viewer. Display Winteracter or DXF 3D models.

Documentation

- Extensive fully integrated electronic documentation in CHM (Windows) or HTML (Linux and Mac) format, under a common contents/index control.

Licensing

- No hidden extras or expensive add-ons required to obtain a complete product. A single licence fee covers all of Winteracter's visual tools, hardcopy drivers and subroutine library.
- No run time or royalty fees on any of the supported platforms,
- Educational licenses available (redistribution of Winteracter based applications limited to non-commercial educational/research usage)

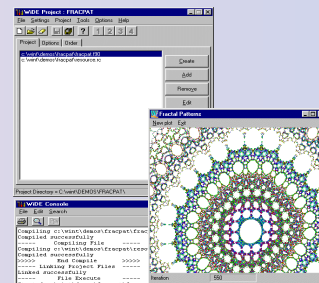
Support and Updates

- Free technical support via email. While the nature and availability of this service is at the sole discretion of ISS Ltd., we generally aim to respond to technical support enquiries within one working day of receipt.
- Free bug fix updates made available via web site.
- Periodic new releases adding substantial new functionality.

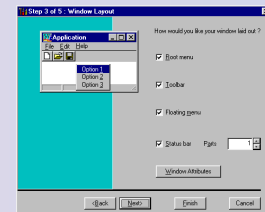
Language/Style

- Winteracter is targeted specifically at Fortran 90/95 users. i.e. It is not just a binding around a Fortran 77 or C library.
- Meaningful names for subroutines and arguments make for more readable and maintainable code.
- WINTERACTER module provides interface definitions and parameter names. Eliminates argument list mismatch errors.
- Many routines take advantage of optional arguments.

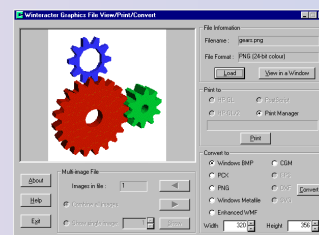
Winteracter is developed in the United Kingdom by
Interactive Software Services Ltd.
For more details, visit www.winteracter.com or contact:



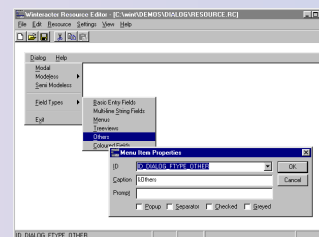
WiDE



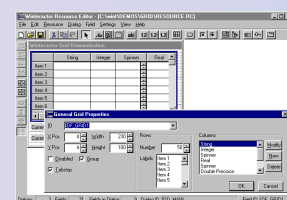
Application Wizard



PlotConv



Menu editor



Dialog editor

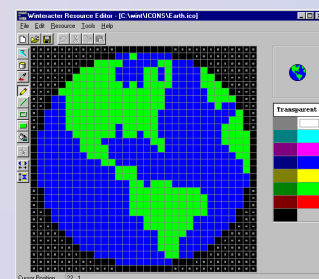
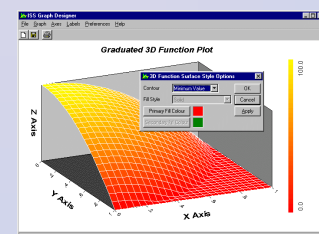


Image editor



Graph designer